

WILIBOX 4-mini PCI CPU Board WBD-324S



The WBD-324S is a single board computer based on the Intel IXP 425 processor operating at 533 MHz. Embedded with 64 MB SDRAM and 16 MB flash, the WBD-324S is one of the most powerful boards on the market with the ability to support a variety of robust applications. This product integrates 4 type III Mini PCI slots allowing for custom-radio integration to provide an endless variety of configurability. In addition, the WBD-324S ships pre-loaded with the Wili-S software suite – a carrier-grade platform with an array of industry-leading security and management features not present on the market today.

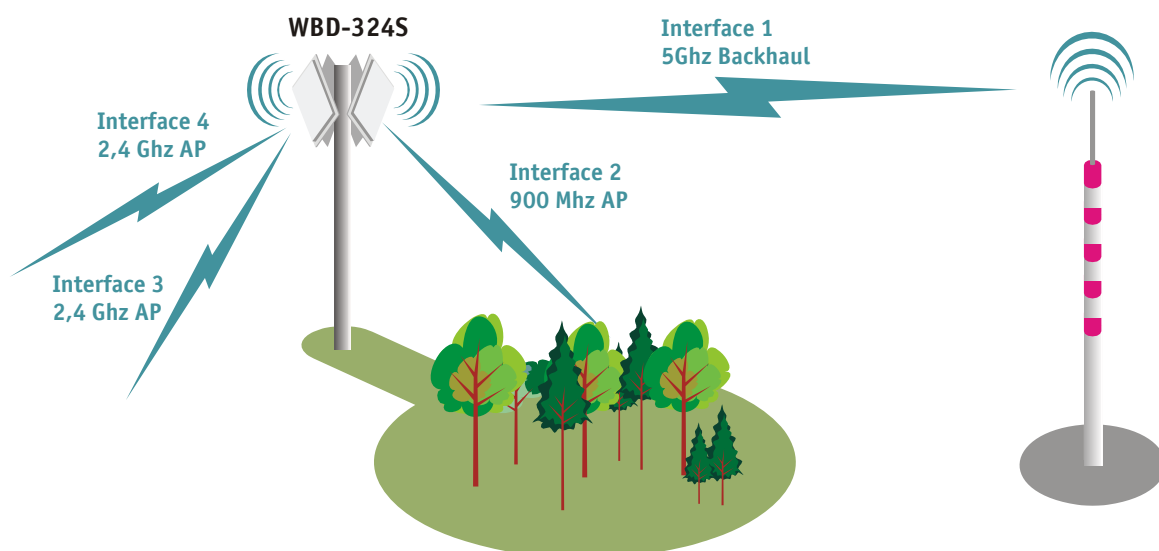
The WBD-324S is designed to work in an outdoor environment with 6 kV ESD protection, power over ethernet (12 to 48 V DC), push-button reset, and LEDs to indicate power, LAN, and WLAN connectivity for each wireless interface. By integrating 4-mini PCI slots onto one PCB, the WBD-324S provides the ability to achieve functionality that would ordinarily require multiple devices, thus creating additional cost, physical space, and wiring concerns.



WBD-324S is Firmware Factory compatible and customers can have their own firmware images created in an online firmware factory. Rebrand and reconfigure your GUI and configuration files, go online, load them on an online firmware factory mechanism and have your firmware built in a few minutes.

Of the multitude of options available with the WBD-324S, the following diagrams illustrate three of the most common operational configurations of the WBD-324S:

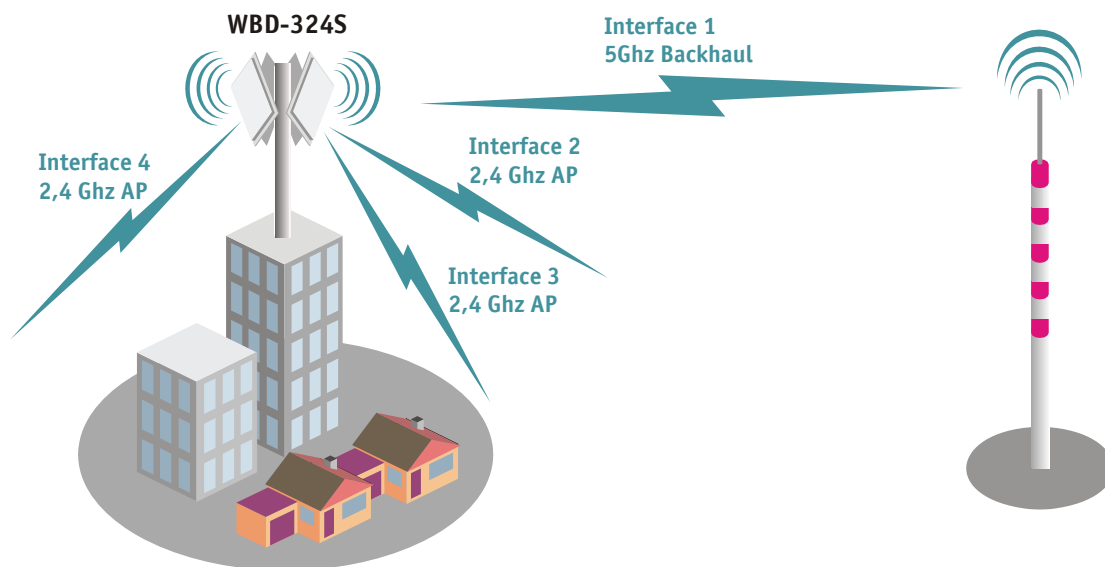
Figure 1. WBD-324S operating with one interface used as a 5 GHz backhaul, and the other three interfaces as APs operating on different frequencies. (useful for locations with mixed terrains and/or interference)



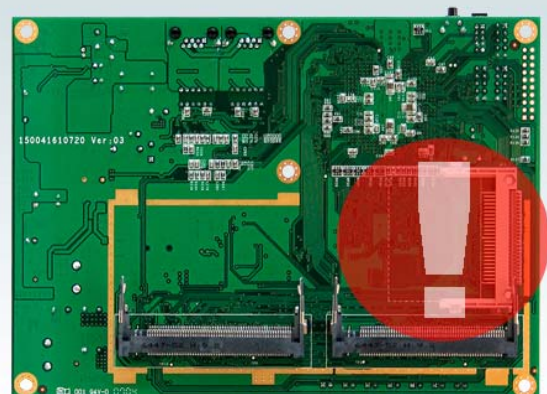
WILIBOX 4-mini PCI CPU Board WBD-324S



Figure 2. WBD-324S operating with one interface used as a 5 GHz backhaul, and the other three interfaces as APs operating on the same frequency. (useful for providing blanket WIFI coverage)



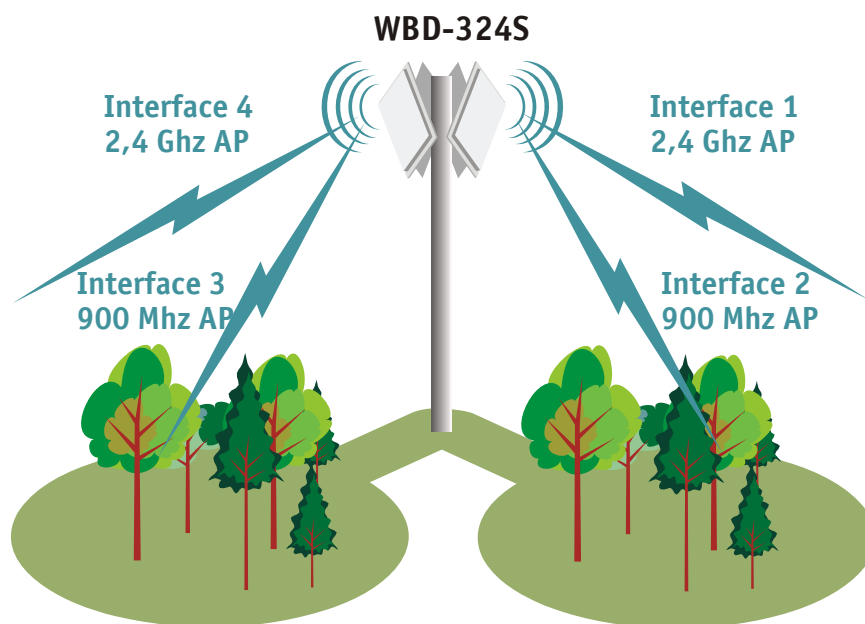
**Additional compact
flash socket
available on board
for memory
extension**



WILIBOX 4-mini PCI CPU Board WBD-324S



Figure 3. WBD-324S operating with all four interfaces in AP mode , 2.4 GHz and 900 MHz. (useful for blanket WIFI coverage in multi-terrain areas)



Specifications

Electrical		Environmental	
Input	PoE, 12-48 VDC	Operating parameters	
Output	Pass-thru PoE power for daisy chaining devices	Temperature	-30°C to +60°C
Mechanical		Humidity	10% to 90% (non-condensing)
Dimensions	180 mm X 130 mm X 30 mm / 7.08 inch X 5.12 inch X 1.18 inch	Storage parameters	
Weight	190 g / 0.418 lb	Temperature	-40°C to +85°C
Memory	64 MB SDRAM	Humidity	5% to 95% (non-condensing)
Flash	16 MB (with external compact flash port for additional capacity)		
I/O	2 x 10/100 TX Ethernet Ports RS-232 Serial Port		